

ITEM	No.Off	DESCRIPTION	LENGTH	GRADE	WEIGHT(kg)	AREA(m <sup>2</sup> )
m0177	1	UB310*46	5185	300PLUS	239.5	6.5
f0321	4	FL8*100	108	300	1.8	0.1
f0272	2	PL12*115	283	300	6.1	0.1
f0261	4	FL12*100	283	300	10.6	0.3
f0230	2	PL12*70	283	300	3.7	0.1
f0227	2	PL12*70	283	300	3.7	0.1
f0033	1	PL20*300	320	300	15.1	0.2
f0014	1	FL10*90	121	300	0.9	0.0

TOTAL MASS = 281.4 kg's

1 - OFF - MK: C0068

Revision	Date	Description
2	05.09.2017	ISSUED FOR FABRICATION
1	31.08.2017	ISSUED FOR FABRICATION

FABRICATION INSPECTION	MAKER	CHECK
CORRECT MATERIAL		
OVERALL LENGTH		
DIMENSIONS		
ORIENTATION		
PROJECT & MARK NO's		
SIGNED AS COMPLETE		
DATE		

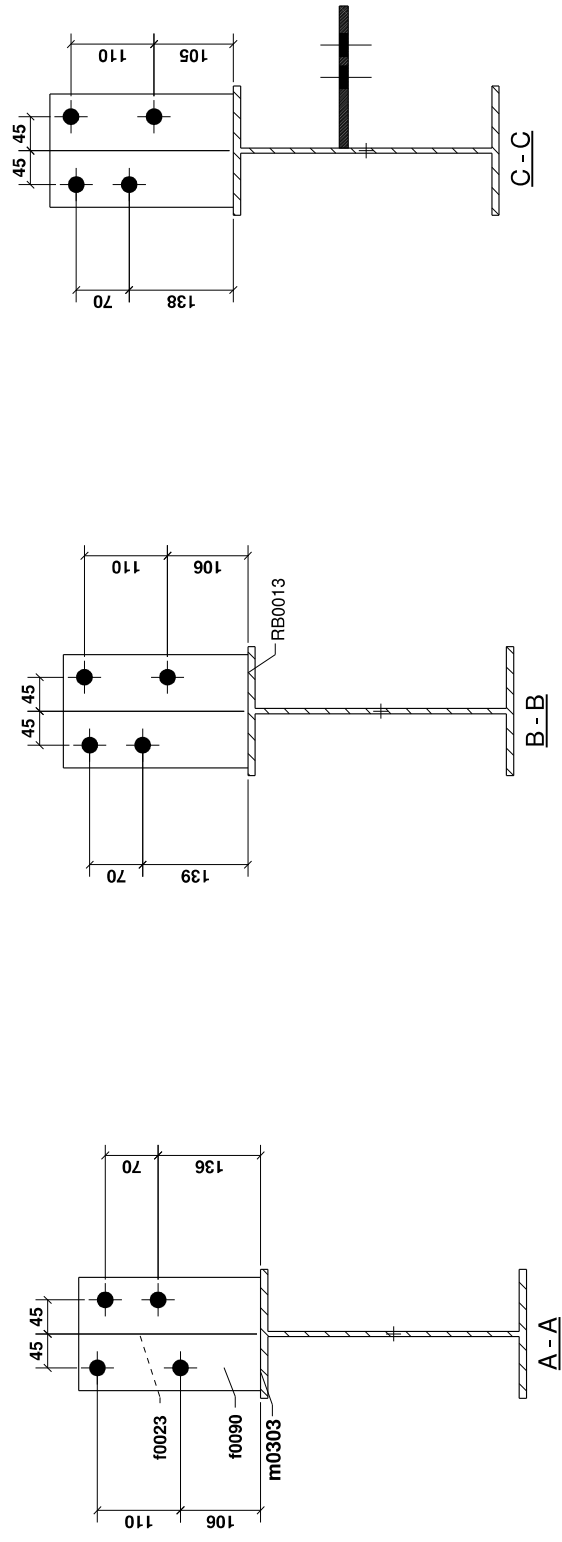
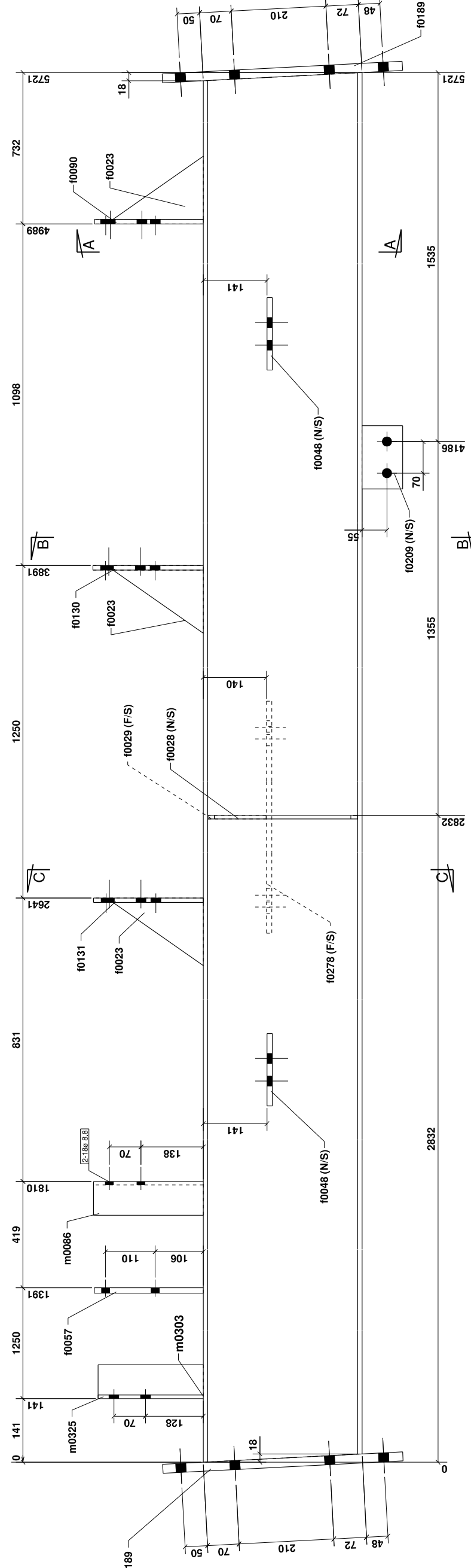
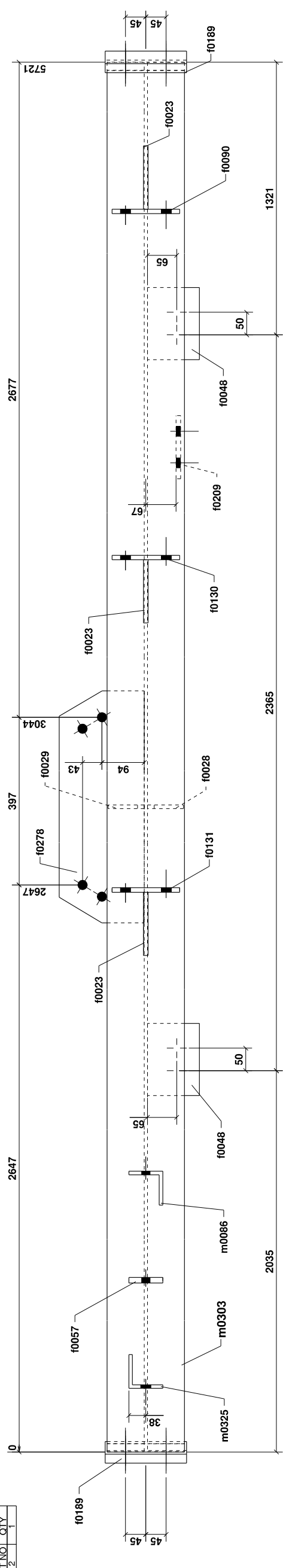
  

Notes:
- All welds to be 6CFW U.N.O
- All holes 220 U.N.O

Camber:	mm	Paint Finish:	GALV
Drawn By:	A.N.	Date:	05.09.2017
Checked By:		Date:	

SAMPLE  
 Plant Room  
 COLUMN



ITEM	No.OFF	DESCRIPTION	LENGTH	GRADE	WEIGHT(kg)	AREA(m <sup>2</sup> )
m0325	1	EA75*75*8	233	300	2.0	0.1
m0303	1	UB360*45	5721	300PLUS	255.7	7.7
m0086	1	EA75*75*8	243	300	2.1	0.1
f0278	1	PL12*188	540	300	9.1	0.2
f0209	1	FL10*90	140	300	1.0	0.0
f0189	2	FL20*180	532	300	30.1	0.4
f0131	1	FL10*150	243	300	2.9	0.1
f0130	1	FL10*150	244	300	2.9	0.1
f0090	1	FL10*150	241	300	2.8	0.1
f0057	1	FL12*75	241	300	1.7	0.0
f0048	2	PL12*115	160	300	3.5	0.1
f0029	1	PL8*80	129	300	0.6	0.0
f0028	1	PL8*80	332	300	1.7	0.1
f0023	3	FL10*200	140	300	3.3	0.1

TOTAL MASS = 319.4 kg's

1 - OFF - MK: RB0013

Revision	Date	Description
2	05.09.2017	ISSUED FOR FABRICATION
1	31.08.2017	ISSUED FOR FABRICATION

Revision	Date	Description

DATE	BY	DESCRIPTION

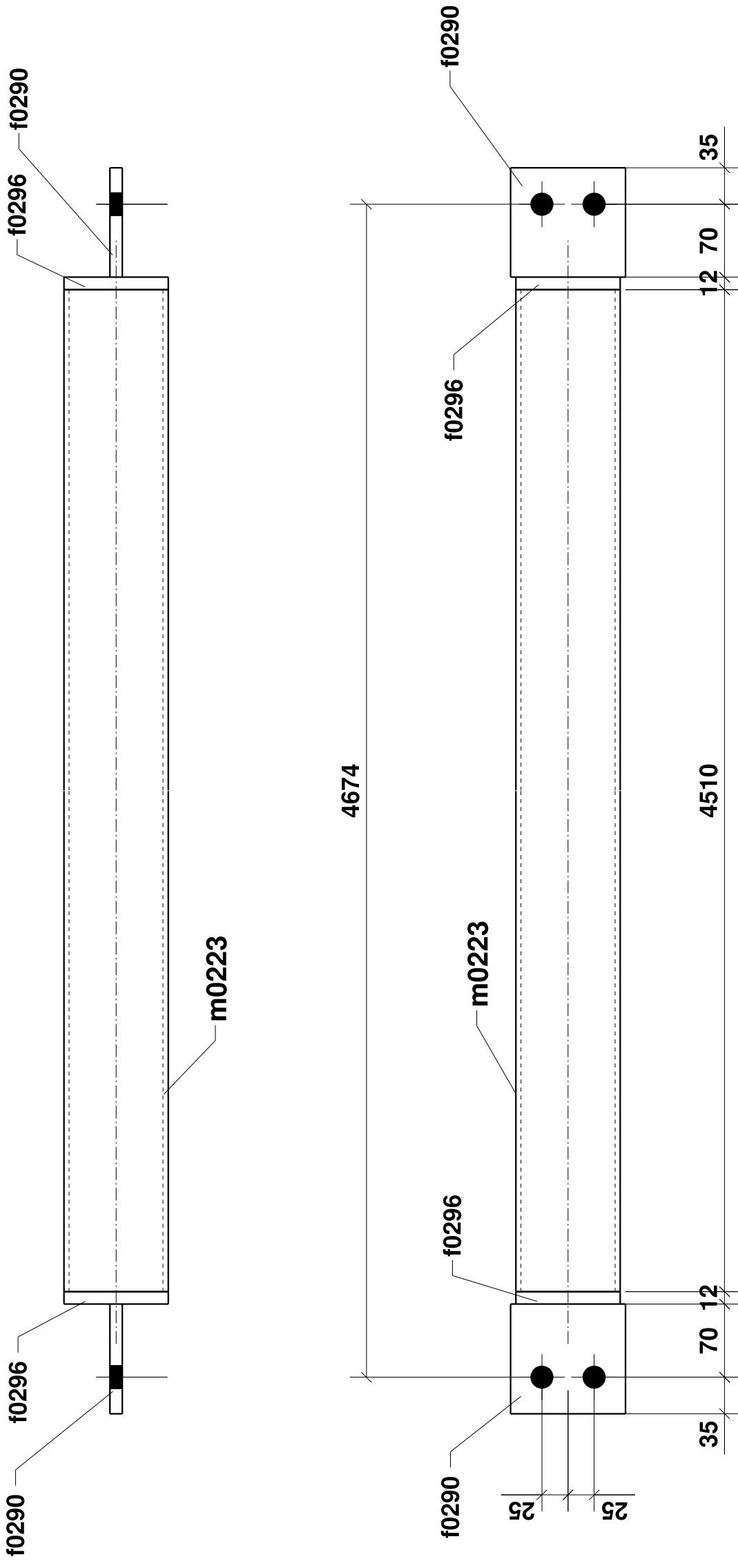
Notes:  
- All welds to be 6CFW U.N.O  
- All holes 220 U.N.O

Camber: mm  
Date: 05.09.2017

Paint Finish: GALV

Checked By: A.N.  
Drawn By: A.N.  
Date: 05.09.2017

SAMPLE  
Plant Room  
ROOF BEAM



LOT NO	QTY
2	1
GRID LOCATION	
BR0044 22-23/Z-	

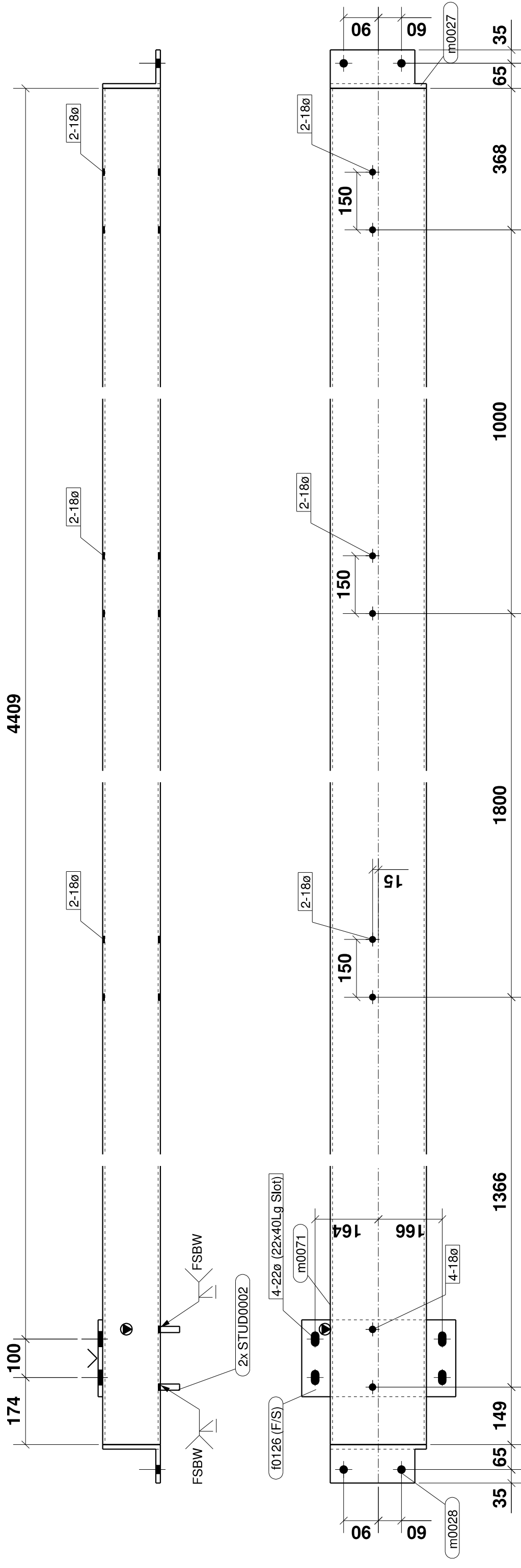
FABRICATION INSPECTION	BOILER MAKER	CHECK
CORRECT MATERIAL		
OVERALL LENGTH		
DIMENSIONS		
ORIENTATION		
PROJECT & MARK NO'S		
SIGNED AS COMPLETE		
DATE		

**1 - OFF - MK: BR0044**

TOTAL MASS = 68.1 kg's						
m0223	1	SHS100*100*5.0	4510	350	64.1	1.7
f0296	2	FL12*100	100	300	1.9	0.0
f0290	2	FL12*110	105	300	2.2	0.1
ITEM	No.OFF	DESCRIPTION	LENGTH	GRADE	WEIGHT(kg)	AREA(m <sup>2</sup> )

Notes: - All welds to be 6CFW U.N.O - All holes 22Ø U.N.O		SAMPLE Plant Room	
Paint: GALV	Camber: mm	ROOF BRACING	
Drawn: A.N.	Date: 05.09.2017		
Checked:	Date:		
2	05.09.2017	ISSUED FOR FABRICATION	
1	25.08.2017	ISSUED FOR FABRICATION	
REV	DATE	DESCRIPTION	

Sticon Job No:	Subcontractor Job No:	DRAWING No.	Revision
2018	CLIENT	BR0044	2



LOT NO	QTY
2	1

GRID LOCATION  
WT0099 23-24/Z-

FABRICATION INSPECTION	BOILER MAKER	CHECK
CORRECT MATERIAL		
OVERALL LENGTH		
DIMENSIONS		
ORIENTATION		
PROJECT & MARK NO'S		
SIGNED AS COMPLETE		
DATE		

### 1 - OFF - MK: WT0099

Notes:  
- All welds to be 6CFW U.N.O  
- All holes 22Ø U.N.O

Paint: GALV  
Camber: mm  
Drawn: A.N. Date: 05.09.2017  
Checked: Date:

SAMPLE Plant Room	WALL TIE
----------------------	----------

TOTAL MASS = 185.5 kg's						
m0071	1	RHS250*150*6.0	4683	350	166.5	3.6
m0028	1	UA150*100*12	250	300PLUS	5.6	0.1
m0027	1	UA150*100*12	250	300PLUS	5.6	0.1
f0126	1	FL12*200	400	300	7.5	0.2
STUD00002	2	STUD BOLT 16	50	300PLUS	0.1	0.0
ITEM	No.OFF	DESCRIPTION	LENGTH	GRADE	WEIGHT(kg)	AREA(m²)